

Ploughing ahead – our midyear milestones

Community update May 2025



25

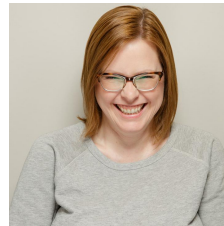
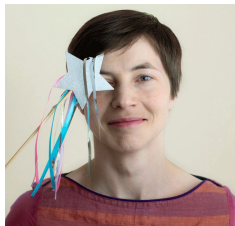
Crossref

CELEBRATING 25 YEARS



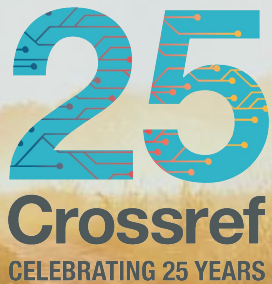
Welcome & introductions

Speakers & Facilitators



Agenda

- Membership update
- Metadata schema update
- The Crossref Roadmap
- Crossref Metadata Awards



Membership update

Amanda Bartell

What we'll cover

- Reminder of Crossref scale
- Welcome to new members - who are you?
- Update from our "Resourcing Crossref for Future Sustainability" program
- Forthcoming update to Crossref bylaws and member terms

Scale of Crossref

22,300 organisational members from **160** countries

- **50%** of members are based in Asia
- **40%** of members are universities or scholar-led

125 Sponsor orgs; **48** Ambassadors

170 million open metadata records with DOIs that are resolved

1.3 billion times per month (**94%** of all DOI usage)

2 billion queries of our metadata every month by **0000s** (?) systems ingesting and reusing this open metadata

2490 new members since last mid-year call May 2024



Resourcing Crossref for Future Sustainability (RCFS Program)

1. Making fees more equitable
2. Simplifying our complex fee schedule
3. Rebalancing revenue sources

RCFS Goal 1: Making fees more equitable

A decorative graphic in the top right corner consisting of light blue lines and dots, resembling a circuit board or network diagram.

Project 1: Evaluate the USD \$275 annual membership fee tier and propose a more equitable pricing structure, which might entail breaking this down into two or more different tiers.

Project 2: Define a new basis for sizing and tiering members for their capacity to pay

What have we learned?

- 19% of members receive no income
- 30% of members spend more than 5% of their total organization expenses on Crossref
- Most common sources of funding: government funding, article processing charges (APC), and self-funding from personal sources.
- Many members, particularly universities and libraries, would find it difficult if we changed the basis of our membership fees to consider overall organization budget, rather than publishing revenue/expenses.

Next steps for making fees more equitable

- Basis of the fee tiers will remain as publishing revenue.
- But...looking to extend the basis to account for non-publishers - currently funder members have a separate set of fees.
- Undertaking further research with members on what their publishing revenue is on a more granular level.
- Investigating the impact of creating a “micro” fee tier
- Liaising with our sponsor organizations
- Take recommendation to M&F committee in June, and to the Crossref board in July.

Goal 2: Simplifying our complex fee schedule

A decorative graphic in the top right corner consisting of light blue lines and dots, resembling a circuit board or network diagram.

Project 3: Address and adjust volume discounts for Content
Registration

Project 4: Address and adjust backfile discounts for Content
Registration

Why is complexity a problem?

- Our billing code and processes = complicated.
- Difficult for potential members to understand cost.
- Difficult for existing members to predict fees.
- Hard for us to provide running costs to existing members or provide closing invoices in timely way.

What do we know about these discounts?

Volume discounts

- Small percentage of all content registered with us
- Benefit small number of larger sized members
- Largest impact on billing complexity

Backfile discounts

- Encourage members to register backfile after they join
- Some heavily used, some underused
- Most changeable in early stages of adoption

Goal 2 proposals

- Remove volume discounts altogether
- Retain backfile discounts for highly used content types (journal articles, books and book chapters) and also content types that are at an early stage of adoption (grants).
- Remove backfile discounts for less used and more mature content types (conference proceedings, technical reports and working papers, theses and dissertations, plus preprints and other posted content).

Next steps for reducing complexity

- Blog post with more information asking for feedback
- Discussion with members who are the highest users of the discounts
- Discussion with M&F Committee in May, and recommendation to the Crossref board in July.

Goal 3: Rebalancing revenue sources

Project 5: Reflect the increasing value of Crossref as a metadata source

Forthcoming update to membership terms and bylaws

- Provide more clarity and alignment between bylaws and membership terms and reflect previous board motions.
- Bring both documents up to date with current processes for suspending and revoking membership, and reviewing these decisions.
- Be more explicit about what membership standards look like related to preserving the integrity of the scholarly record.

What happens next?

- Changes to bylaws already in effect.
- New member terms come into effect in mid-July.
- Primary contact on each member account will be emailed in the next few days.
- No need to do anything.



25

Crossref

CELEBRATING 25 YEARS

Schema update

Martyn Rittman and Patricia Feeney

Metadata updates



ROR can now be supplied as a funder identifier

Grants schema 0.2.0:

- new funding types: APC, BPC, infrastructure

5.4 update:

- publication types for citations
- status support for preprints
- version metadata

Typed citations

Can include a 'type' with citations supplied with metadata records

Types are:

blog

blog post

book

book chapter

collection

conference paper

conference proceeding

dataset

dissertation

journal

journal article

other

patent

peer review

poster

preprint

protocol

registered report

report

software

standard

web resource

Working on: 5.5+ update

Expand contributor role support by:

- allowing multiple roles
- adding CRediT vocabulary

Improve support for names:

- alternate and single names
- name identifiers (ISNI, wikidata)
- new 'group' contributor





CRediT vocabulary

Conceptualization

Data curation

Formal analysis

Funding acquisition

Investigation

Methodology

Project administration

Resources

Software

Supervision

Validation

Visualization

Writing – original draft

Writing – review & editing

Contributor vocabularies

Crossref	CRediT
author	Writing - original draft
editor	Writing - review & editing
chair	Supervision
reviewer review-assistant stats-reviewer reviewer-external reader	Writing - review & editing
translator	Writing - original draft
corresponding author*	
other*	

Also:

Remodel current 'organization' contributor to 'group' contributor:

- include support for organisation IDs and org metadata
- re-label 'group' to avoid confusion
- ★ roles expansion will also apply ★

Improved name support:

- Add support for single names
- Add name IDs (ISNI, wikidata)

Working on:

Funding data:

- discrete element for grant DOI in funding data

Statements

- funding
- acknowledgement
- data availability

Abstracts:

- BITS
- ONIX
- generic

Grants update 0.3.0

Support for beneficiaries and organisations

Expanded language support

Project identifiers

- support for RAiD (and other) identifiers

Statements:

- acknowledgement - narrative text section



Planning for:



Subjects, keywords, expanding date types, journal article types, support for unsupported record types (posters, blogs, protocols, podcasts, registered reports), multilingual metadata, expanding relationships...

Metadata Advisory Group

- Help shape metadata development
- Will discuss new metadata to adopt, best practices, overall needs of metadata providers and users
- Open to members and non-members with experience with Crossref metadata

Apply now: <https://forms.gle/D9xYn7Y72hzXnDa18>



25

Crossref

CELEBRATING 25 YEARS

The Crossref roadmap

Helena Cousijn, Lena Stoll, and Sara Bowman

The Programs approach

Focus on

- working towards better cross-team alignment
- shared responsibility
- improved communication and learning
- making more progress on the things members need

Three programs

- Co-creation and Community Trends (CCT)
- Contributing to the Research Nexus (CRN)
- Open and Sustainable Operations (OSO)



Program: Co-creation and community trends

- This program maps to the “co-creation” strategic theme and includes interfaces such as reports/dashboards, registration forms, connections and collaborations such as Open Funder Registry, ROR, ORCID auto-update, as well as OJS and other partner plugins.
- This also includes the website and any front-end things to support other programs.
- Crucially, this program also includes ISR, Crossmark, Similarity Check, and supporting the community with new research integrity tools.





Contribute to an environment where the community identifies and co-creates solutions for broad benefit

Done

- Record registration form: built-in reference deposit; submit another article in same journal/issue
- Integrating with [Rogue Scholar](#) to automate the archiving and assignment of DOIs for our blog

In progress

- RCFS research and data gathering
- ISR: investigation of individual cases; reviewing revocation process
- Multilingual metadata quality webinars
- Build dashboard of previous deposits for record registration form

Next up / planning

- Modernise Participation Reports interface
- Similarity Check v2 transition
- Build record registration forms for more work types
- Sunset Metadata Manager
- DSpace integration

Program: Contributing to the research nexus

- This program manages and oversees all activities relating to contributing to the Research Nexus.
- A lot of the work in this program revolves around our REST API, but also includes our other APIs.
- There is also a focus on incorporating external data sources like [Retraction Watch](#) and Event Data and supporting the community of metadata users with API sprints and more modern options for retrieving metadata based on usage and need.





A sustainable source of complete, open, and global scholarly metadata and relationships

Done

- Retraction Watch retractions in the REST API
- Changes for Schema 5.4 (including ROR for funders)
- 2025 public data file
- Metadata sprint in Madrid

In progress

- Upgrading REST API infrastructure
- Event Data / data citation stability
- New matching service

Next up

- Member metadata in the REST API
- Consultation on Metadata Plus and metadata delivery options

Program: Open and Sustainable Operations

- This program maps to the “POSI” strategic theme. It focuses on supporting and strengthening the core functions our members rely on and enabling future growth.
- It includes queue management and metadata processing, most small apps, authentication, and architecture and infrastructure projects like moving from the datacenter to AWS.
- Also includes modernising operations in general. Not just tech, but also finance and human resources: projects like automation and business system integration.





Manage Crossref openly and sustainably, modernising and making transparent all operations so that we are accountable to the communities that govern us

Done

- Moving from Oracle to an open-source database, PostgreSQL
- Automating parts of the process to keep [Sponsor information](#) on our website up to date

In progress

- Moving out of the data centre to AWS cloud infrax
- Prefix allocation automation
- Automating new member setup in our systems

Next up / planning

- Extracting billing code from our main codebase, to set up as its own service.
- A redesign of the Crossref content system

Our (open) roadmap

Crossref strategy

Crossref productboard



Your metadata priorities

<https://www.menti.com/aliaarrh7qmn>

Q&A

Please use the Q&A box to ask your questions





25

Crossref

CELEBRATING 25 YEARS

Crossref Metadata Awards

Kora Korzec, Oscar Donde, and Lisa Schiff



Crossref Metadata Excellence Awards

Noyam Publishers

GigaScience Press

eLife

American Society for Microbiology

Universidad La Salle Arequipa Perú

Crossref Metadata Enrichment Award

Instituto Geologico y Minero de España



The background of the slide features a photograph of a tractor plowing a field during sunset. The sky is a mix of orange and blue, and the field is partially tilled. A stylized circuit board pattern is overlaid on the left side of the image, extending from the top left corner down towards the bottom left.

25

Crossref

CELEBRATING 25 YEARS

Thank you for joining us!

Continue conversations on our forum at
community.crossref.org

Thank you



Mastodon: [@crossref@mastodon.online](https://mastodon.online/@crossref)

Bluesky: [@crossref.bsky.social](https://bsky.social/@crossref)

What are we thinking about: crossref.org/blog

Conversations: community.crossref.org

Get in touch: feedback@crossref.org

Newsletter: Click `Get email updates` in website footer